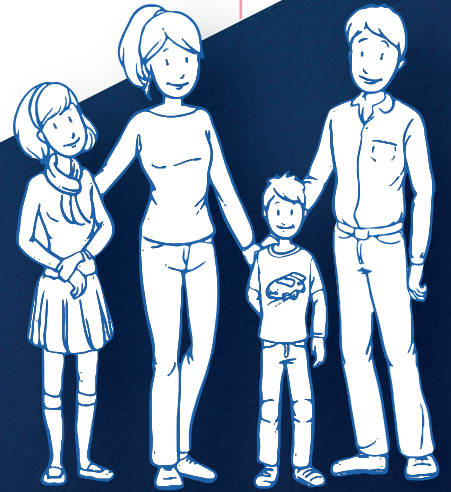




YOUR ROADMAP
To wellness



TCCH SERVICES

Medical

Mobile Medical Unit |||

Dental

Mobile Dental Unit |||

Eye Care

Walk-In Primary Care (WIPC)

Behavioral Medicine

Enrollment Services

Women, Infants & Children (WIC)

Pharmacy **Rx**

Maternity Support Services (MSS)

Women's Health

Closures THE FOLLOWING LOCATIONS
ARE PERMANENTLY CLOSED

- KENNEWICK**
- 3180 W. Clearwater, Suites D & E
- 830 W. Vineyard Dr
- PASCO**
- 1801 E. Sheppard St

KENNEWICK

PASCO

RICHLAND

BASIN CITY

- 1** 3180 W. Clearwater, Suites A, B
- 2** 721 S. Auburn Street **Rx**

- 3** 515 W. Court Street **Rx**
- 4** 715 W. Court Street

- 5** 829 Goethals Drive
- 6** 915 Goethals Drive **Rx**

- 7** 6950 Rd 170